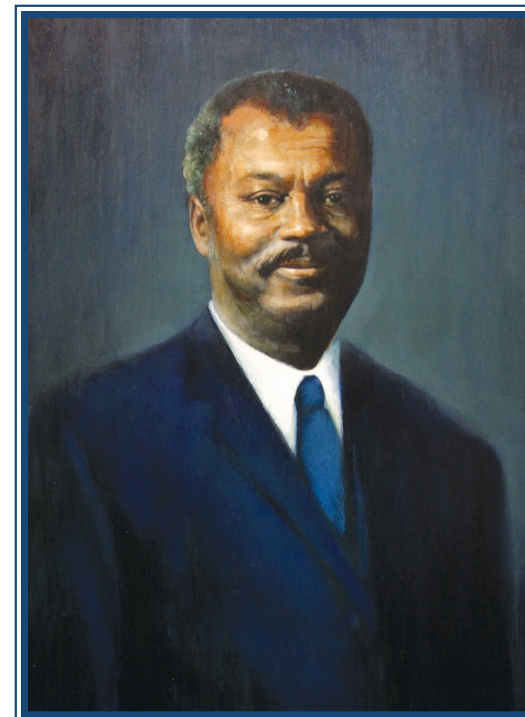


The Donald M. Payne, Sr. Library
Berkeley College
536 Broad Street, Newark, New Jersey 07102

973-642-3888 ext. 6170
md@BerkeleyCollege.edu

BerkeleyCollege.LibGuides.com/DonaldMPayneLibrary



Donald M. Payne, Sr. Library
Dedication Ceremony

Berkeley College • Newark, NJ
October 31, 2013

In Memoriam

*Representative Donald Milford Payne, Sr.
10th Congressional District of New Jersey*

July 16, 1934 – March 6, 2012

A former teacher and lifelong proponent of education, Congressman Donald M. Payne, Sr. made it a priority to advance policies to make the dream of college a reality for many.

A native of Newark, Congressman Payne was the first African-American from New Jersey elected to Congress, serving 12 terms and faithfully representing his constituency from 1988 until his death.

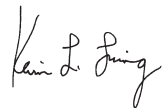
President Barack Obama described Congressman Payne as having “made it his decision to fight for working families.” New Jersey Governor Chris Christie called Congressman Payne “a great role model for every person in New Jersey who aspires to public service.”

A strong supporter of Congressman Payne and his advocacy of education, Berkeley College is honored to make this dedication today in memory of his enduring legacy.

October 31, 2013



Dario A. Cortes, Ph.D.
President



Kevin Luing
Chairman of the Board



Donald Milford Payne, Sr.

Donald Milford Payne, Sr. was born July 16, 1934, in Newark, NJ to William Evander and Norma (Garrett) Payne. He grew up in a working-class area where everyone “...worked for low wages, although we didn’t think of it as living in poverty, and there was a real sense of neighborhood, of depending on one another.” He earned a B.A. from Seton Hall University in 1957 and went on to graduate studies. In 1958, he married Hazel Johnson. His wife’s tragic death in 1963 left him to care for their two preschool-aged children, Donald Milford, Jr. and Wanda.

Donald Payne was a dedicated educator. Students at South Side High School and Robert Treat Junior High School in Newark and Pulaski Elementary School in Passaic, NJ benefited from his commitment to quality education. Another passion for Mr. Payne was his work with the Young Men’s Christian Association (YMCA), which began in 1964. He organized self-help projects that brought together local street gang members and adult volunteers. He eventually served as the organization’s first African-American national president and as chairman of its Refugee and Rehabilitation Committee, a position that involved travel to more than 80 countries.

Donald Payne’s political career began with Newark’s South Ward Democratic organization. He also served on the Essex County Board of Chosen Freeholders. In November of 1988 he made history as the first African-American from New Jersey elected to the United States Congress with a nearly 80,000-vote victory over his Republican challenger in New Jersey’s 10th Congressional District.

Upon winning the election, Mr. Payne commented in The New York Times on his persistence in capturing the congressional seat to which he had long aspired, saying, “Nothing is as powerful as a dream whose time has come. Sometimes a political leader is marching a little in front or a little behind the people, but once in a while the marcher and the drumbeat are in exactly the same cadence, and then, finally, good things happen.” He emphasized the importance of representation for the predominantly African-American district, saying that “When Congress was established, it was designed to have all segments of the population represented” and noted that the election of his state’s first African-American congressman would “make the country stronger and make New Jersey stronger.”

Donald Payne, Sr. served in Congress until his death in 2012.